

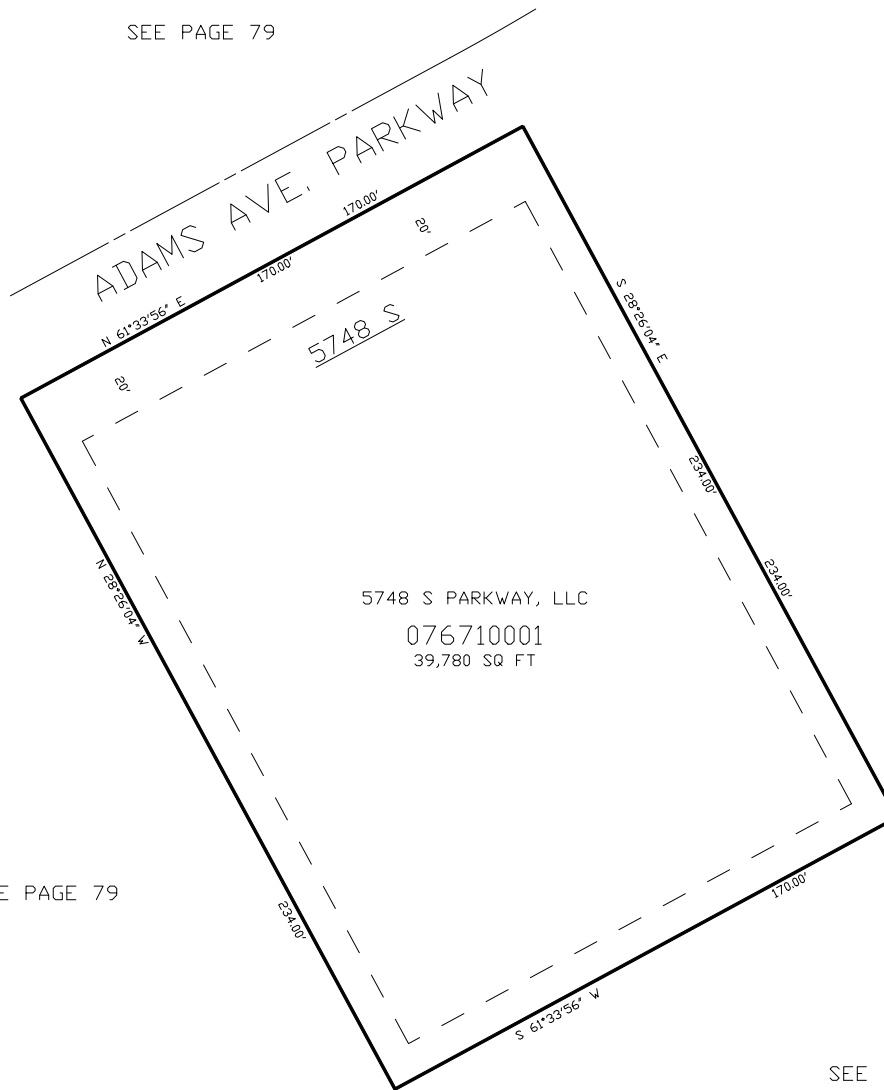
PART OF THE NE.1/4, OF SECTION 20, T.5N., R.1W., S.L.B. & M.
PLEASANT VALLEY BUSINESS PARK LOT 3

IN SOUTH OGDEN CITY

TAXING UNIT: 393

SCALE 1" = 30'

SEE PAGE 79



SEE PAGE 652

SEE PAGE 79

SEE PAGE 79

10' UTILITY & DRAINAGE EASEMENTS EACH
SIDE OF PROPERTY LINES AS INDICATED
BY DASHED LINES EXCEPT AS OTHERWISE
SHOWN.

FOR COMPLETE ENG. DATA SEE
ORIGINAL DEDICATION PLAT IN
BOOK 62, PAGE 60 OF RECORDS.

FOR TAX PURPOSES ONLY

KBL 10-2005